

Intermediate : Lesson 1 Personality

TOPIC

Today's lesson is about...

**TEACHER'S
ANSWERS**

- 1 Vocabulary: Personality adjectives
- 2 Discuss: Personality traits at work and friendship
- 3 Read: Survey about growing distrust
- 4 Grammar: Present tense question forms



WARM-UP

You have 1 minute to think about the following prompt. Then you should speak for 1-2 minutes.

Describe someone you get along with.

- 1 Who is he/she?
- 2 How did you meet?
- 3 Why do you get along with him or her?
- 4 What is his or her personality like?



VOCABULARY

- 1 honest (adj) **truthful**
- 2 loyal (adj) **faithful, showing support**
- 3 organized (adj) **able to be neat and tidy, able to plan well**
- 4 pretentious (adj) **pretending to be more important or impressive**
- 5 stingy (adj) **unwilling to spend money**
- 6 fussy (adj) **hard to please**
- 7 petty (adj) **mean and concerned with unimportant problems**
- 8 gullible (adj) **will believe anything**
- 9 paranoid (adj) **extremely suspicious**

WHICH PERSONALITY TRAITS ARE NEGATIVE AND WHICH ARE POSITIVE?

IDIOMS

Know-it-all

Someone who thinks they know everything

Couch-potato

Someone who is lazy and/or stays home all day

Big mouth

Someone who talks too much

Loose canon

Someone who is very unpredictable

CAN YOU MAKE A SENTENCE FOR EACH IDIOM?



VOCABULARY PRACTICE

Use the vocabulary words to fill in the blanks.

big mouth pretentious fussy couch-potato
loyal petty gullible

1. She can be really pretentious. That's why she's always dressing in designer clothes and talking to popular people.
2. A dog is an incredibly loyal animal that will follow you wherever you go.
3. Don't tell him any secrets because he's a big mouth.
4. I'm pretty fussy when it comes to interior design because I feel really strongly about what patterns, color, and furniture I like and don't like.
5. Don't tease him. He's so gullible that he'll believe you.
6. She won't come hiking with us because she's such a couch-potato. She'd rather stay home and watch TV.
7. Last time I was late to feed the cat, he ripped up my curtains. He's so petty!

DISCUSSION 1 AT WORK

At work people can really click or their personalities can clash, which makes the office an interesting place to see different types of personalities.

- 1 What personality traits do you think are important for a manager or boss?
- 2 Which traits are terrible for a boss?
- 3 How about co-workers? Which traits would you prefer your co-workers have or not have?
- 4 Do you think your personality is different at work than home? Why or why not?



DISCUSSION 2 FRIENDSHIP

Friends can have similar or dissimilar personalities, which is why people say birds of a feather flock together but also that opposites attract.

- 1 Do you and your friends have similar personalities? Why or why not?
- 2 Would you be friends with a fussy person? Why or why not?
- 3 Are there any personality traits that you avoid when looking for a friend? If yes, what are they? If not, why not?
- 4 Do you have any stingy friends? If yes, how do they act?
- 5 How about gullible friends? If yes, how are they gullible?



READING

Survey about growing distrust

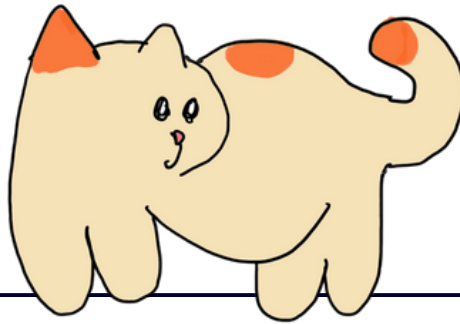
A new survey from the University of Oxford shows that 25% of adults in the UK are distrustful of others. On top of that 5-8% of people were extremely paranoid. The survey leaders said that some of this distrust comes from social problems, like discrimination, and some of it comes from mental health factors.

Many of the people who answered the survey said that they were scared of being gullible. Being mistrustful of others is a way that people can keep themselves safe. However, many people said that they also wanted to trust people again.

Can you explain the reading in one sentence?

READING DISCUSSION

- 1 Why do you think people who answered this survey feel distrustful of others?
- 2 Are many people paranoid nowadays? Why or why not?
- 3 Do you think it's better to trust or distrust others? Why?
- 4 How can people earn your trust?
- 5 Who is the most honest or loyal person that you know? How are they honest or loyal?



GRAMMAR

Present Tense Question Forms

(Wh- Question) + Do/Does + Subject + Verb?

1. Does she like meeting new people?
2. What does he like to do?

(Wh- Question) + To Be + Subject?

1. Is he friendly?
2. Who is a couch-potato?

LOOK AT THE FOUR EXAMPLES. CAN YOU MAKE FOUR EXAMPLES OF YOUR OWN SIMILAR TO THE FOUR ABOVE?

GRAMMAR PRACTICE

Put the questions into the correct order.

1. they/are/paranoid/? *Are they paranoid?*
2. people/fussy/he/does/like/? *Does he like fussy people?*
3. so/why/gullible/he/is/? *Why is he so gullible?*
4. an/person/she/is/organized/? *Is she an organized person?*
5. you/of/what/with/kind/people/friends/do/to/like/be?

What kind of people do you like to be friends with?

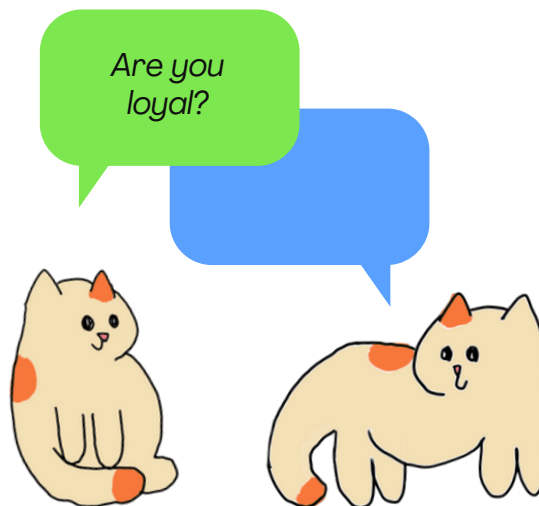
**GRAMMAR DISCUSSION**

Ask your partner/teacher questions using the following formulas and vocabulary words.

(Wh- Question) + Do/Does + Subject + Verb?

(Wh- Question) + To Be + Subject?

honest
 loyal
 organized
 pretentious
 stingy
 fussy
 gullible
 petty
 paranoid
 know-it-all
 couch-potato
 big mouth
 loose canon



USEFUL PHRASES

All of these sentence prompts can be used to ask about personality.

- Do you consider yourself to be (a)...?
- Can you be (a)...?
- What makes you (a)...?
- How would you describe...?
- How do you deal with...?

Can you be a gullible person?

CAN YOU FINISH EACH SENTENCE PROMPT IN YOUR OWN WAY?

Now let's do a role play!

ROLE PLAY

Sales Interview

Role Play Part A: You're a sales manager and you're looking for a new assistant to help sell your product. You really want a cheerful, friendly candidate.

Role Play Part B: You're an honest and organized student who is a little bit gullible and can be a couch-potato, but you really want a sales job.

Choose your parts and role play this with your partner or teacher.

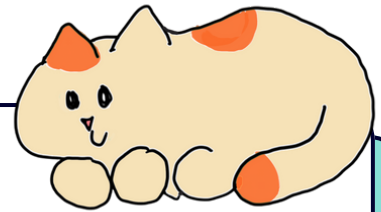


OSCAR LESSONS

The End

TOPIC

You've learned all about personality!



Well done!

OPTIONAL

Match the vocabulary words with a synonym.

EXTRA PRACTICE

Vocabulary	Synonym
1. honest	a. flashy
2. fussy	b. chatterbox
3. stingy	c. mean
4. petty	d. truthful
5. pretentious	e. hard to please
6. big mouth	f. penny-pinching

OPTIONAL

Practice your vocabulary with these extra discussion questions.

**EXTRA
PRACTICE**

- 1 Would you describe yourself as a know-it-all? Why or why not?
- 2 Are you a know-it-all when it comes to a specific subject? Why or why not?
- 3 Are you a couch-potato? Why or why not?
- 4 Do you consider yourself a big mouth? Why or why not?
- 5 Do you think you can be a loose canon? Why or why not?